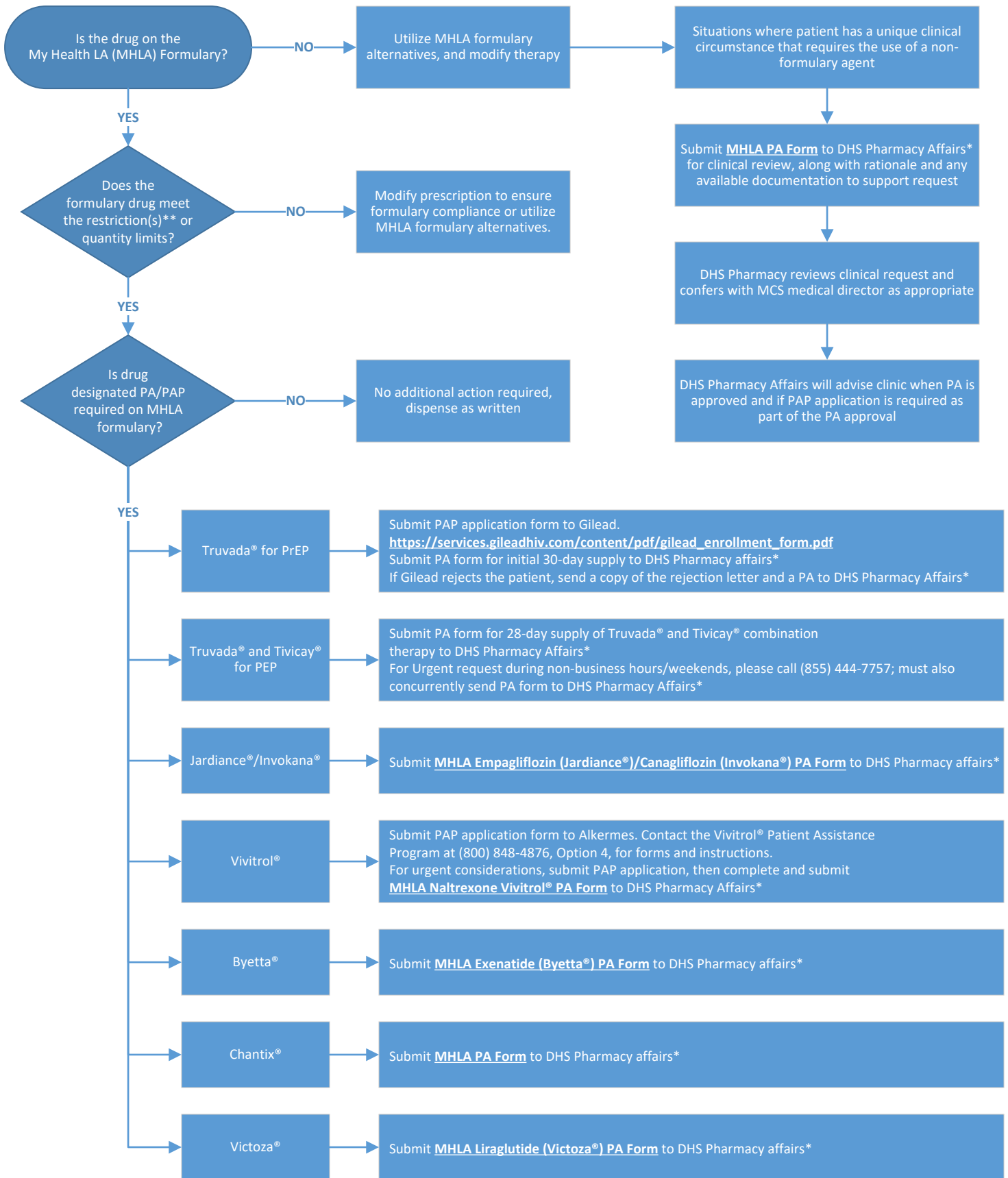


MHLA Pharmacy Process Workflow: PA/PAP Details



*PA forms can be submitted to DHS Pharmacy Affairs via e-mail: priorauth@dhs.lacounty.gov or via fax: (310) 669-5609

**MHLA restriction and guidelines must be followed. MHLA may audit clinic to verify compliance with formulary guidelines.